

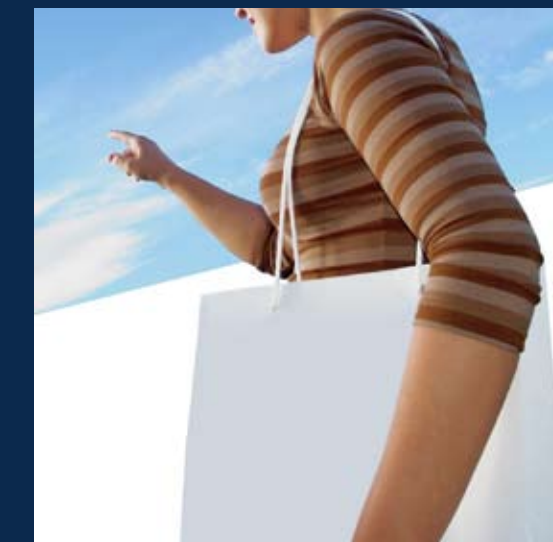


TRANQUILITY, COMFORT, FREEDOM... HOME...

THE AZZURO

Developed by ROXY HOMES

Tucked away in a charming neighbourhood in the East, far from the hustle and bustle of the city, THE AZZURO is your luxury dream home away from home. With the East Coast Park just a tossed pebble away and legendary local eateries right at your doorstep, you'll never want to leave your personal retreat; but on the off chance you do, the city is but mere minutes away via the ECP and PIE.



PEARL OF THE EAST

With easy access to the hip suburban enclaves of Katong and Siglap, get ready to be spoiled by a mouth-watering selection of famous delicacies in this gastronomic paradise. And why jostle with the weekend crowd in town when you can shop leisurely at nearby Parkway Parade? With Kembangan MRT station within walking distance, and the ECP and PIE just minutes away, zipping around will be a breeze. What's more, with its close proximity to reputable schools like Tao Nan School, CHIJ Katong and Victoria JC, you can be rest assured that owning a piece of THE AZZURO is a lifetime investment.



THE AZZURO

- 5 mins to Kembangan MRT
- 1 min walk to Telok Kurau Park
- Easy access to East Coast Park via Siglap Park Connector
- * Minutes to the city and airport via the ECP & PIE
- * Near reputable schools and Siglap/Katong eateries





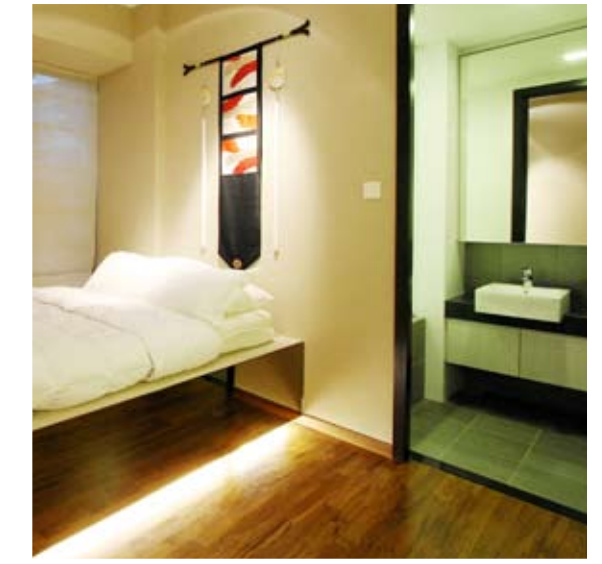
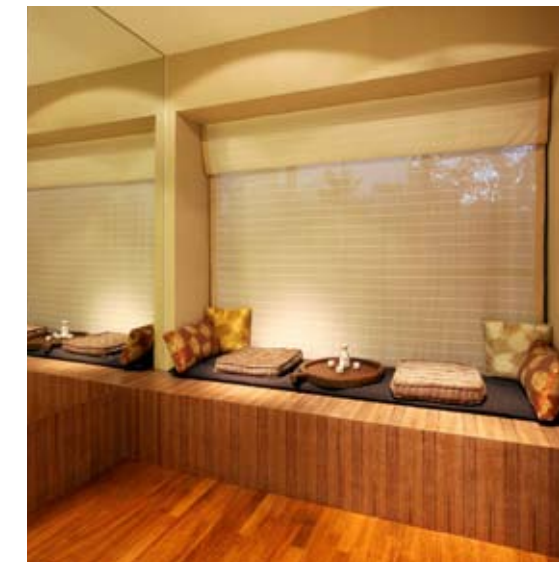
COMFORTS OF HOME



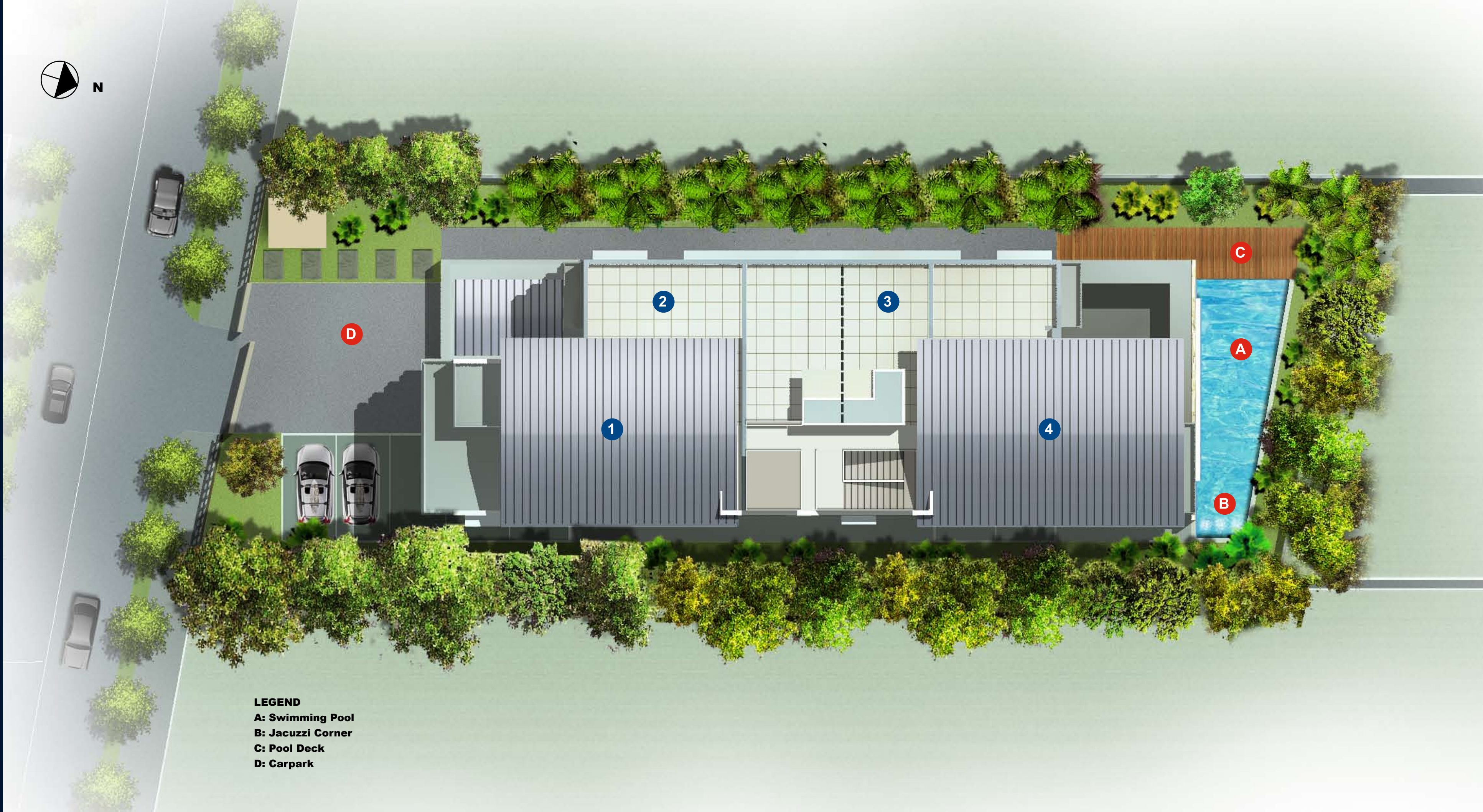
Look forward to de-stressing and rejuvenating your knotted muscles with an undisturbed soak in the luxurious lap pool. Set amidst lush tropical greenery and a serene, spa-like ambiance, The Azzuro is the epitome of contemporary boutique living. With just 15 coveted units to choose from, it promises a private and intimate resort-like setting like none other.



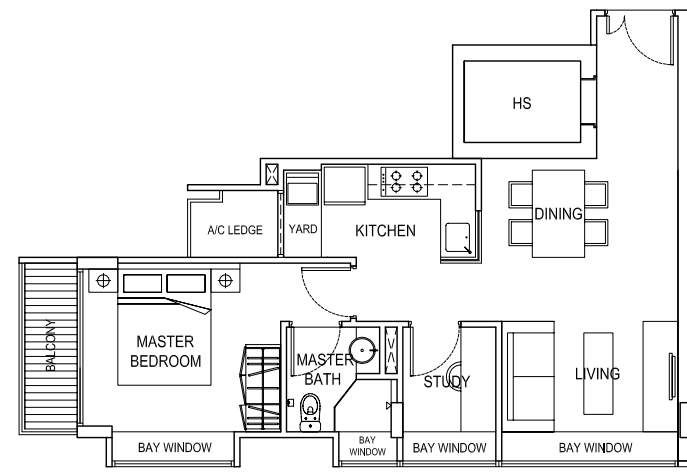
INSPIRED INTERIORS



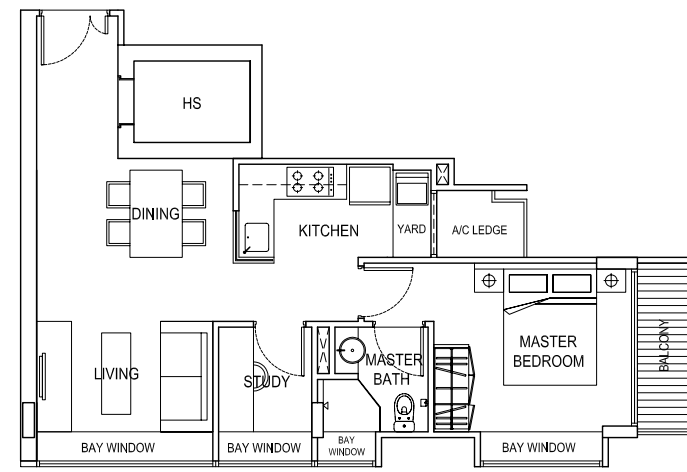
Sophistication knows no bounds at The Azzuro. Each unit is meticulously finished and fitted with only the best home appliances, so whether you choose the cosier two-bedroom option or the luxuriously appointed three-bedroom penthouse, you'll find yourself surrounded and pampered by the most elegantly appointed interiors.



LEGEND
A: Swimming Pool
B: Jacuzzi Corner
C: Pool Deck
D: Carpark

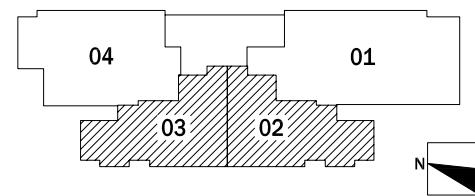


UNIT 03

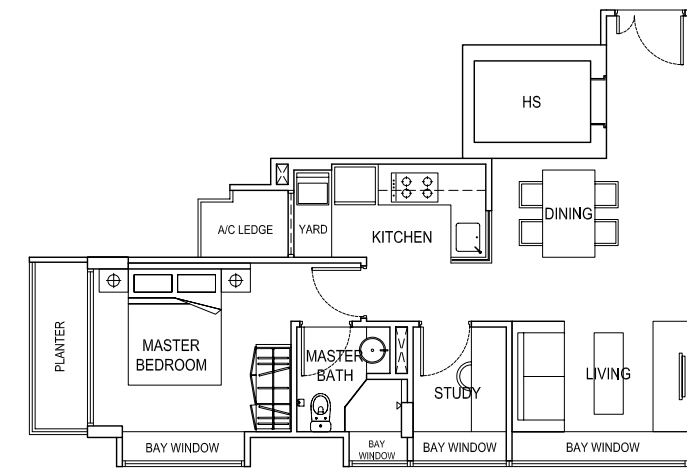


UNIT 02

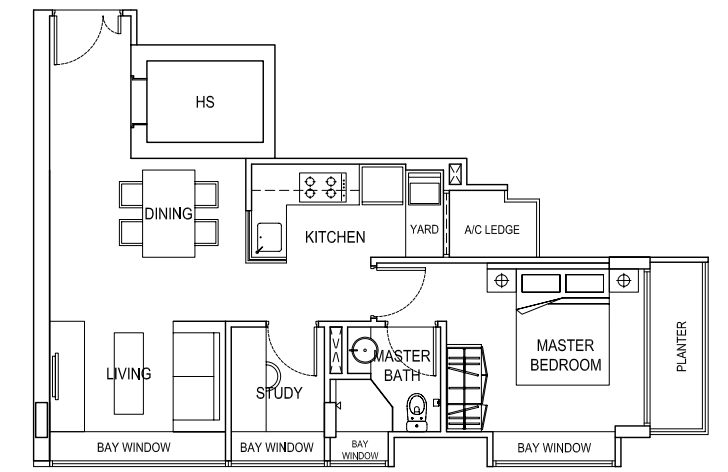
TYPE B-2 #02-02, #02-03
(60 sqm / 646 sqft)



* ALL PES, BALCONIES, PLANTERS & ROOF TERRACE AREAS ARE "NOT TO BE ENCLOSED OR ROOFED OVER".

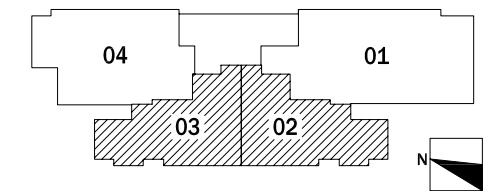


UNIT 03

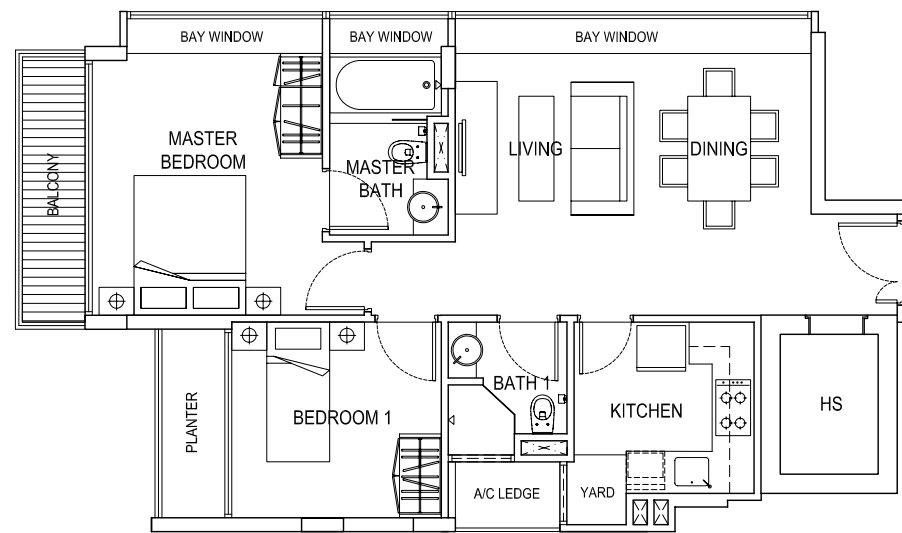


UNIT 02

TYPE B #03-02, #03-03, #04-02, #04-03
(60 sqm / 646 sqft)

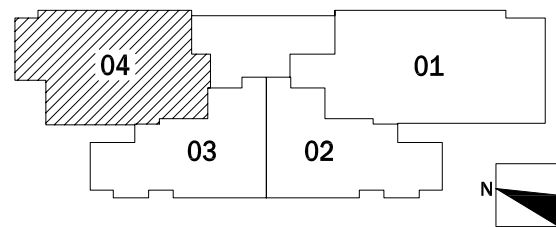


* ALL PES, BALCONIES, PLANTERS & ROOF TERRACE AREAS ARE "NOT TO BE ENCLOSED OR ROOFED OVER".

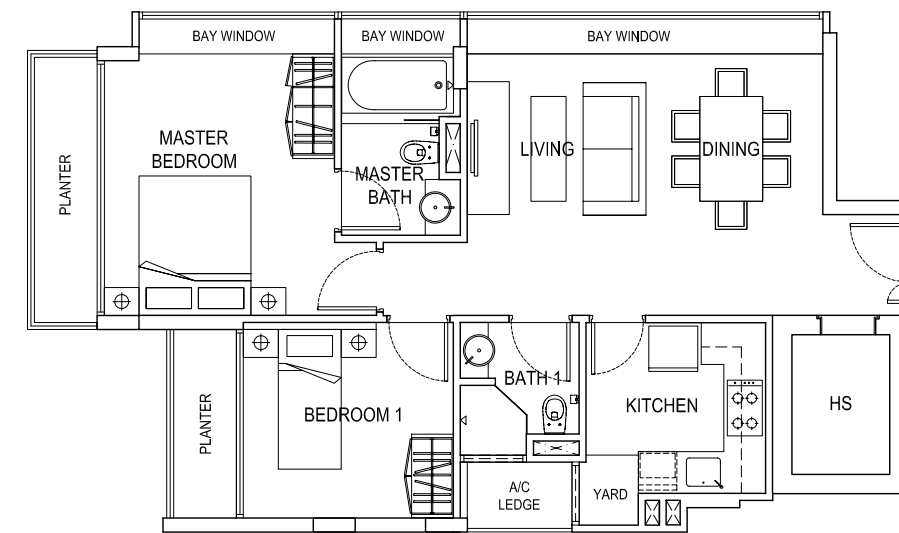


TYPE C-2 #02-04

(80 sqm / 861 sqft)

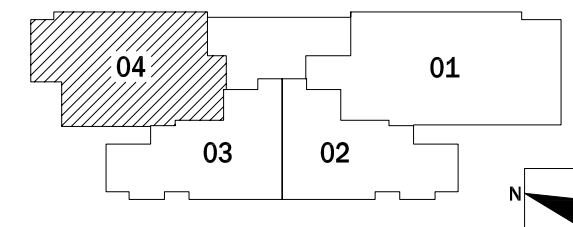


* ALL PES, BALCONIES, PLANTERS & ROOF TERRACE AREAS ARE "NOT TO BE ENCLOSED OR ROOFED OVER".

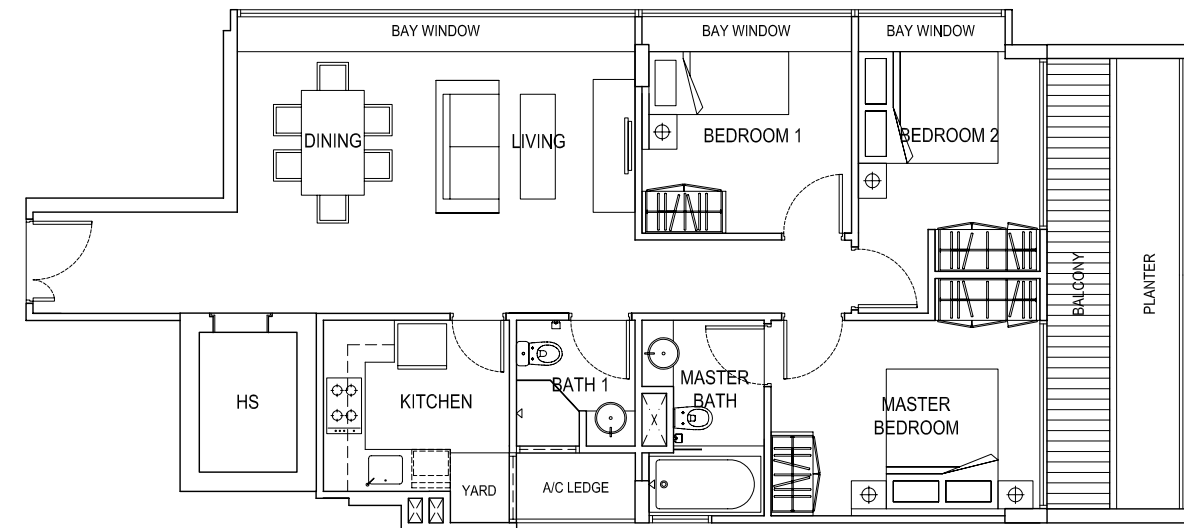


TYPE C #03-04, #04-04

(80 sqm / 861 sqft)

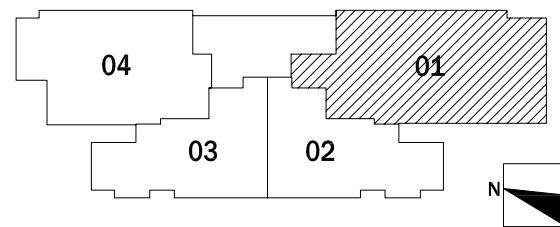


* ALL PES, BALCONIES, PLANTERS & ROOF TERRACE AREAS ARE "NOT TO BE ENCLOSED OR ROOFED OVER".

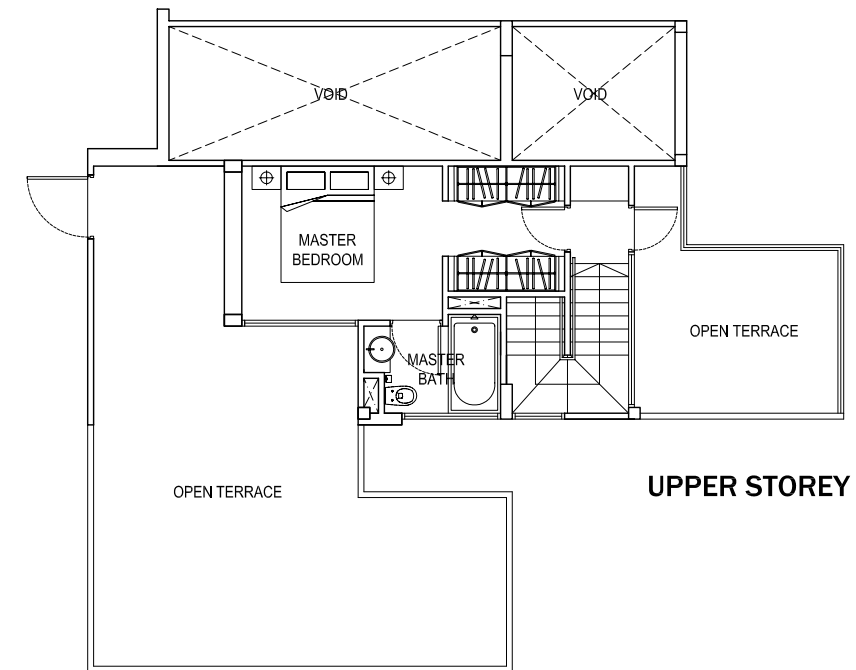


TYPE A #02-01, #03-01, #04-01

(102 sqm / 1098 sqft)

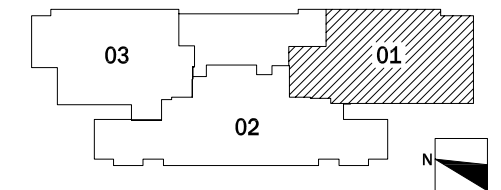


* ALL PES, BALCONIES, PLANTERS & ROOF TERRACE AREAS ARE "NOT TO BE ENCLOSED OR ROOFED OVER".

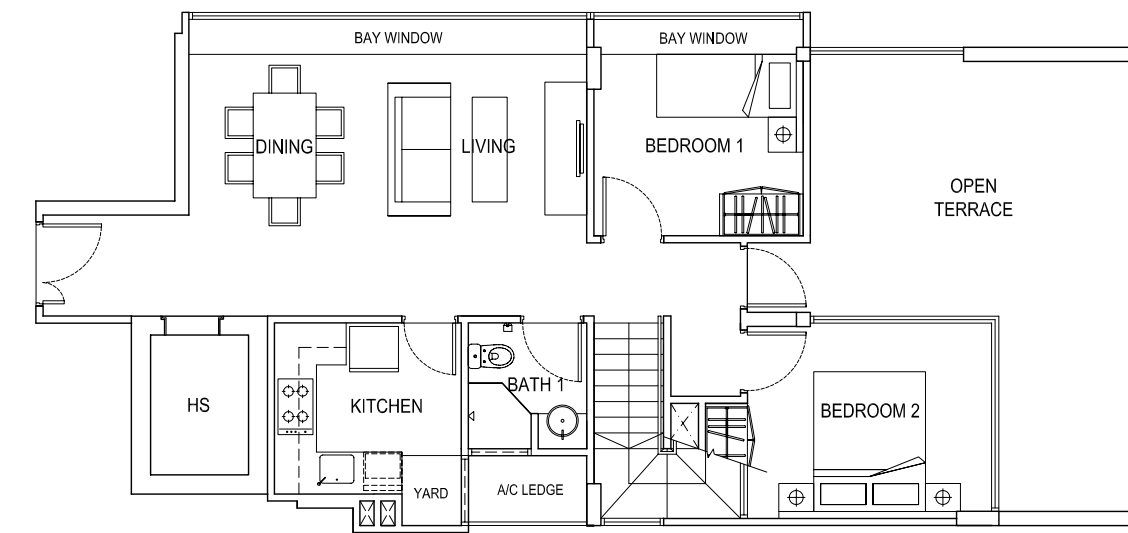


TYPE A-P #05-01

(197 sqm / 2121 sqft)

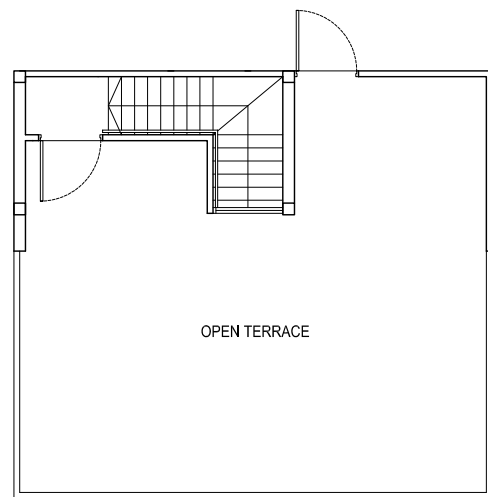


UPPER STOREY



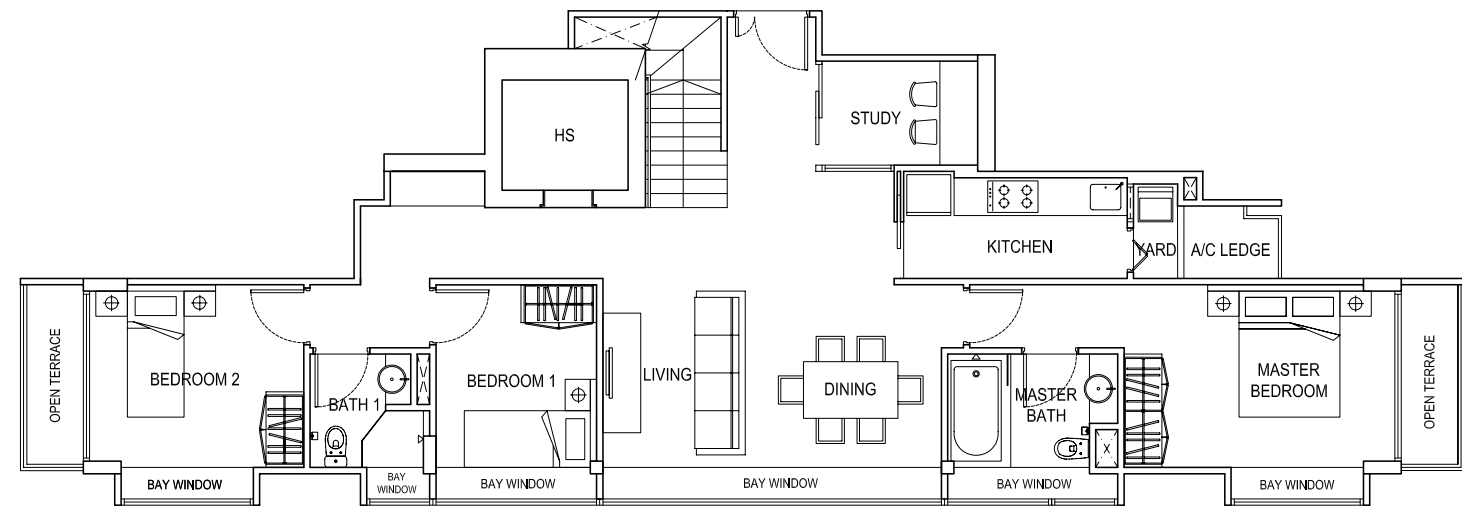
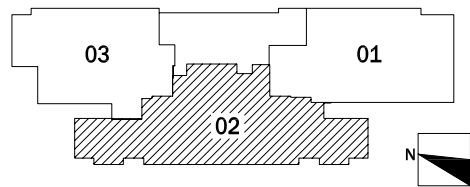
LOWER STOREY

* ALL PES, BALCONIES, PLANTERS & ROOF TERRACE AREAS ARE "NOT TO BE ENCLOSED OR ROOFED OVER".



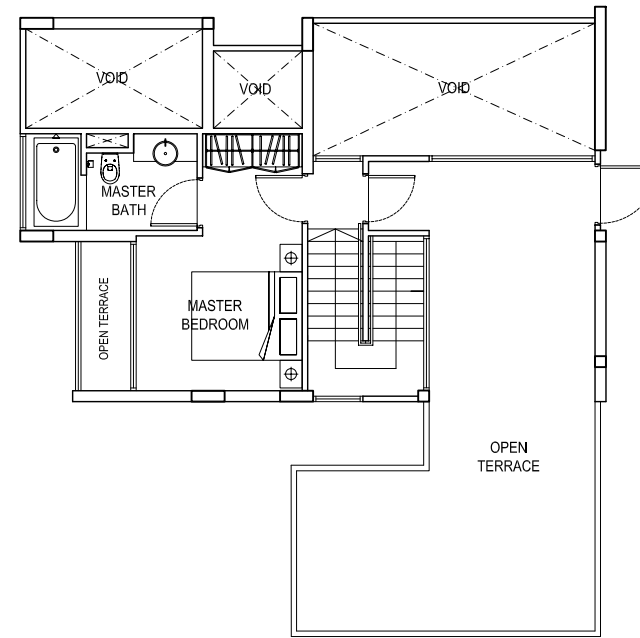
UPPER STOREY

TYPE D #05-02
(171 sqm / 1841 sqft)



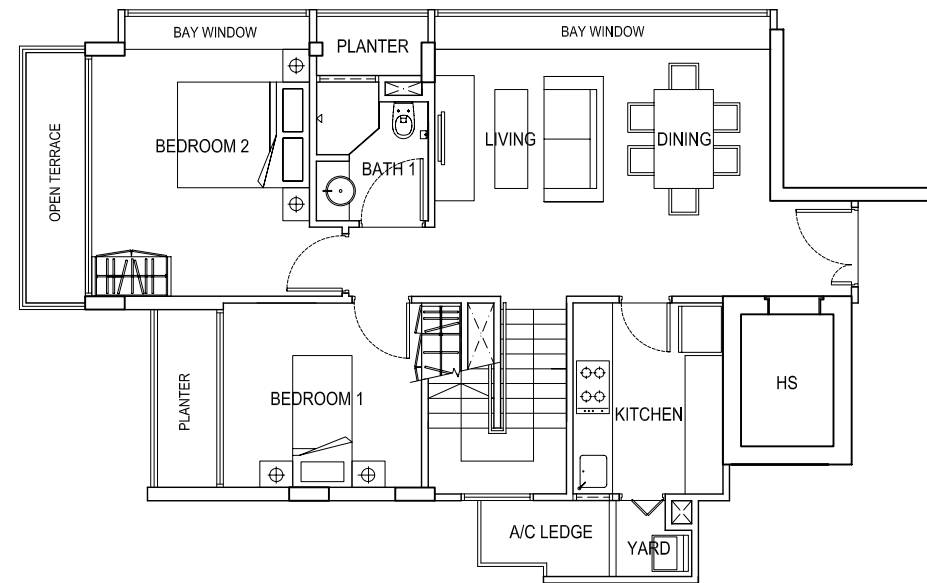
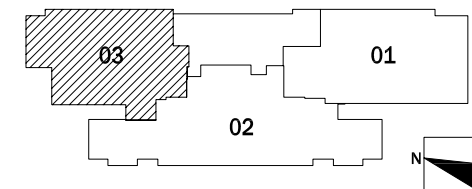
LOWER STOREY

* ALL PES, BALCONIES, PLANTERS & ROOF TERRACE AREAS ARE "NOT TO BE ENCLOSED OR ROOFED OVER".



UPPER STOREY

TYPE C-P #05-03
(164 sqm / 1765 sqft)



LOWER STOREY

* ALL PES, BALCONIES, PLANTERS & ROOF TERRACE AREAS ARE "NOT TO BE ENCLOSED OR ROOFED OVER".